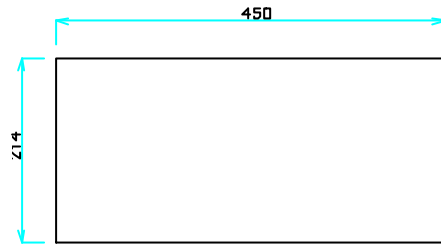
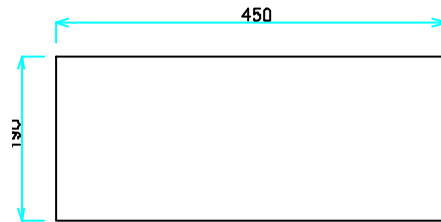


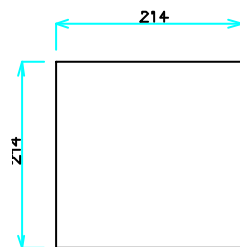
ケース本体 (12mm 単板または合板)



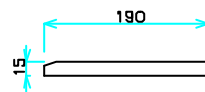
扉板および背板 (各1)



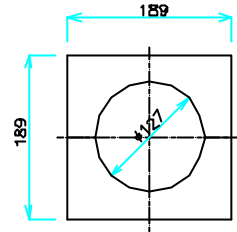
側板 (数量2)



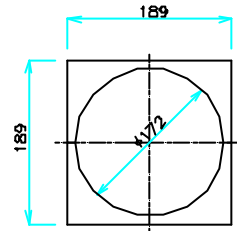
天板および底板 (各1)



案内板 (10×15角棒, 数量8)

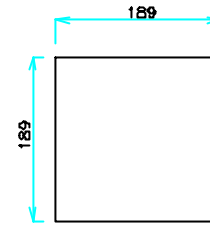


ベンチレータ押さえ板 (数量2)

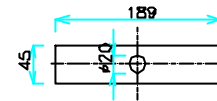


タンク部押さえ板 (数量2)

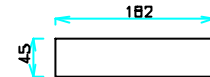
引出し小物入れ



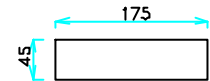
底板 (4mm シナ合板, 数量1)



側板 (7mm 桐集成材, 数量1)



側板 (7mm 桐集成材, 数量2)



側板 (7mm 桐集成材, 数量1)